

Kreativ-

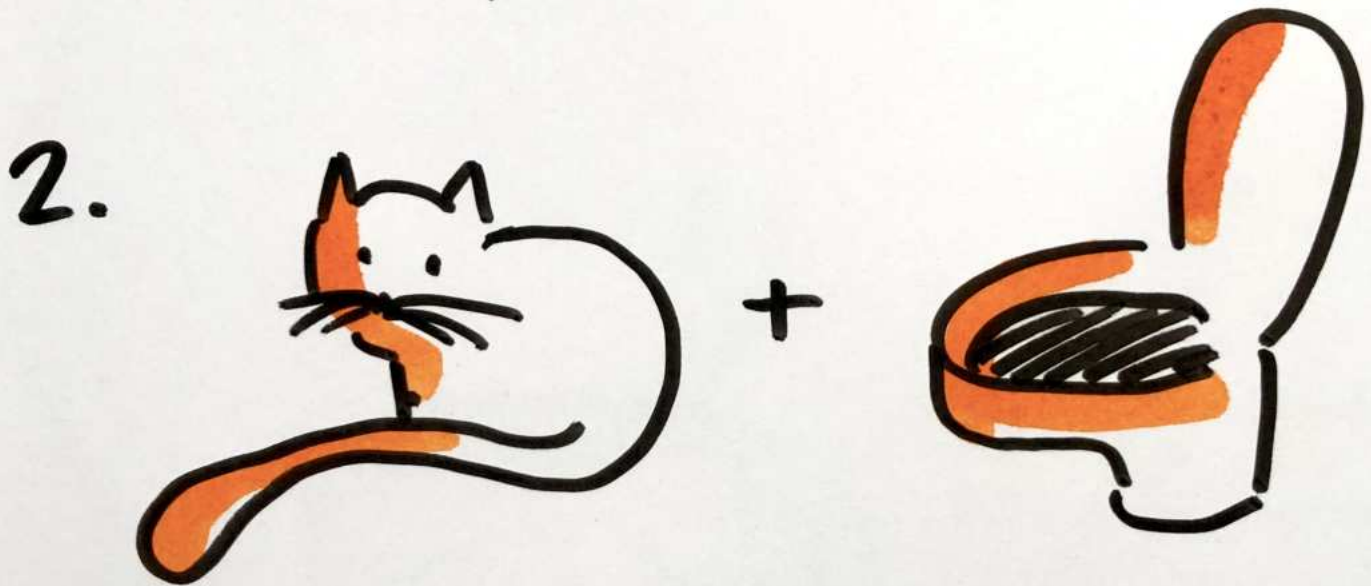
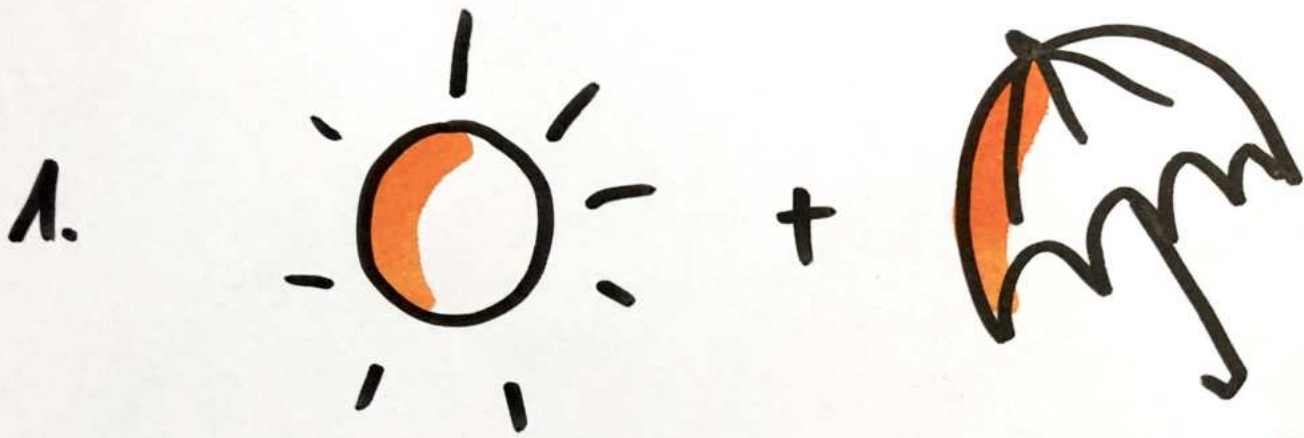
METHODEN FÜR
eigene BILDIDEEN

1. REBUS
RÄTSEL

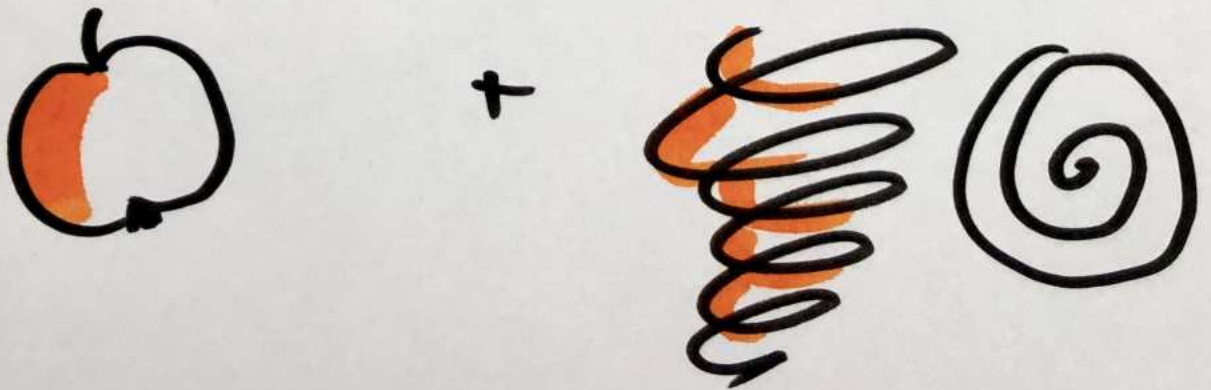
2. OBJEKTE
↓
PERSON
mit
Emotionen

3. ICONS/OBJEKTE
bekommen gegenteilige
Bedeutung

1. REBUS - RÄTSEL



3. APFEL STRUDEL

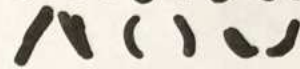


2. OBJEKTE PERSONALISIEREN

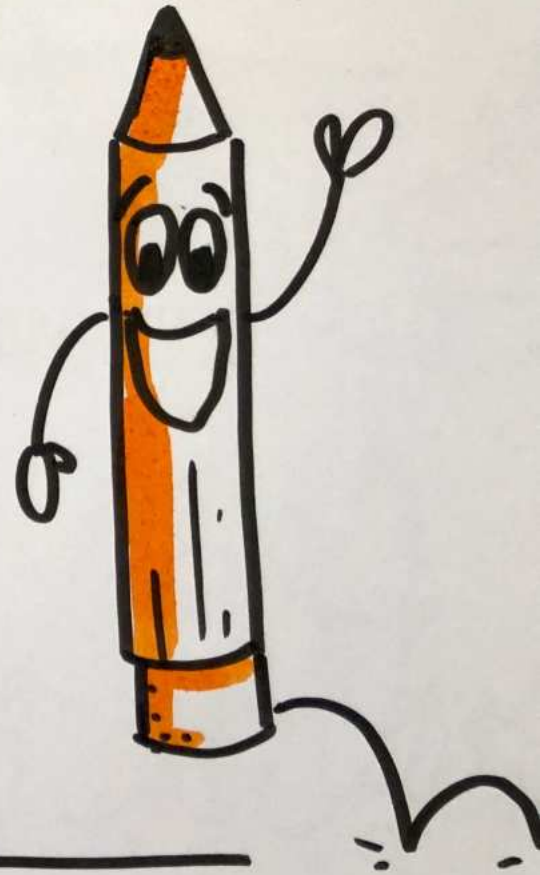
EMOTIONEN



AUGENBRAUEN:



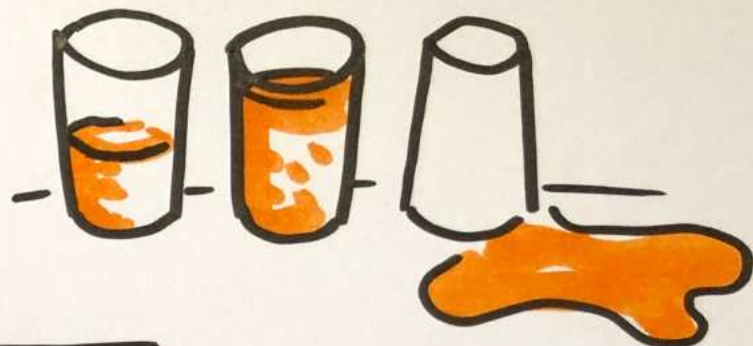
MÜNDER:



3. SYMBOLKRAFT UMDEUTEN



SPAREN



VERLUST



SAMMELN

SCHUTZ

